



導電性高分子ハイブリッドアルミ電解コンデンサ
CONDUCTIVE POLYMER HYBRID ALUMINUM ELECTROLYTIC CAPACITORS

PJV/PZJ

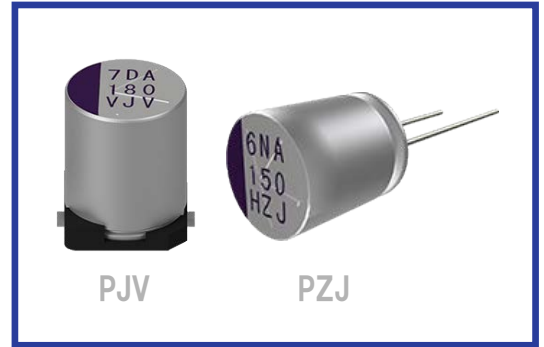
PJV / PZJ

シリーズ
SERIES

125°C 4,000時間、高温度、高リップル品
125°C 4,000 hours, High Temperature, High Ripple Current

AEC-Q200

RoHS
Compliance



◆規格表/SPECIFICATIONS

| 項目 Items | 特 性 Characteristics | | | | | | | | | | | | |
|--|--|-------------------------------|--|------------------------------|---|---------------|--|-------------------------|---|------|------|------|--|
| カテゴリ温度範囲 Category Temperature Range | -55 ~ +125°C | | | | | | | | | | | | |
| 定格電圧範囲 Rated Voltage Range | 25 ~ 63Vdc | | | | | | | | | | | | |
| 静電容量許容差 Capacitance Tolerance | ±20% (20°C, 120Hz) | | | | | | | | | | | | |
| 漏れ電流 Leakage Current (MAX) | I=0.01CV又は3μAのいずれか大なる値以下 (定格電圧印加2分後) I=0.01CV or 3μA whichever is greater. (After 2 minute) I=漏れ電流(μA) C=静電容量(μF) V=定格電圧(Vdc) I = Leakage Current C = Capacitance V = Rated Voltage | | | | | | | | | | | | |
| 損失角の正接 (tan δ) Dissipation Factor (MAX) | <table border="1"> <tr> <td>定格電圧(Vdc) Rated Voltage</td> <td>25</td> <td>35</td> <td>50</td> <td>63</td> <td>(20°C, 120Hz)</td> </tr> <tr> <td>tan δ</td> <td>0.14</td> <td>0.12</td> <td>0.10</td> <td>0.08</td> <td></td> </tr> </table> | 定格電圧(Vdc) Rated Voltage | 25 | 35 | 50 | 63 | (20°C, 120Hz) | tan δ | 0.14 | 0.12 | 0.10 | 0.08 | |
| 定格電圧(Vdc) Rated Voltage | 25 | 35 | 50 | 63 | (20°C, 120Hz) | | | | | | | | |
| tan δ | 0.14 | 0.12 | 0.10 | 0.08 | | | | | | | | | |
| 耐久 性 Endurance | 125°C中で4000時間定格電圧(定格リップル重畳)印加後、下記の規格を満足すること。 After applying rated voltage with rated ripple current for 4000 hours at 125°C, the capacitors shall meet the following Criteria. | | | | | | | | | | | | |
| 高温高湿負荷 Biased Humidity | 85°C、85% RH中で2000時間定格電圧印加後、下記の規格を満足すること。 After applying rated voltage for 2000 hours at 85°C and humidity of 85%, the capacitors shall meet the following Criteria. | | | | | | | | | | | | |
| 規 格 Criteria | <table border="1"> <tr> <td>静電容量変化率 Capacitance Change</td> <td>初期値の ±30%以内 Within ±30% of the initial value.</td> </tr> <tr> <td>損失角の正接 Dissipation Factor</td> <td>規定値の 200%以下 Not more than 200% of the specified value.</td> </tr> <tr> <td>等価直列抵抗 ESR</td> <td>規格値の 200% 以下 Not more than 200% of the specified value.</td> </tr> <tr> <td>漏れ電流 Leakage Current</td> <td>規格値以下 Not more than the specified value.</td> </tr> </table> | 静電容量変化率 Capacitance Change | 初期値の ±30%以内 Within ±30% of the initial value. | 損失角の正接 Dissipation Factor | 規定値の 200%以下 Not more than 200% of the specified value. | 等価直列抵抗 ESR | 規格値の 200% 以下 Not more than 200% of the specified value. | 漏れ電流 Leakage Current | 規格値以下 Not more than the specified value. | | | | |
| 静電容量変化率 Capacitance Change | 初期値の ±30%以内 Within ±30% of the initial value. | | | | | | | | | | | | |
| 損失角の正接 Dissipation Factor | 規定値の 200%以下 Not more than 200% of the specified value. | | | | | | | | | | | | |
| 等価直列抵抗 ESR | 規格値の 200% 以下 Not more than 200% of the specified value. | | | | | | | | | | | | |
| 漏れ電流 Leakage Current | 規格値以下 Not more than the specified value. | | | | | | | | | | | | |
| 低温特性 Low Temperature Stability (インピーダンス比) Impedance Ratio (MAX) | $Z(-25°C) / Z(+20°C) \leq 1.5$ (100kHz) $Z(-55°C) / Z(+20°C) \leq 2.0$ | | | | | | | | | | | | |

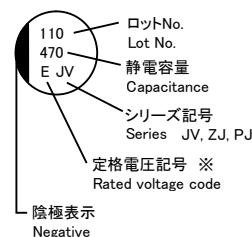
◆呼称方法/PART NUMBER

□□□ PJV/PZJ □□□□□ M □□□ □□ φD×L
 定格電圧 シリーズ名 静電容量 静電容量許容差 副記号 リード加工記号 ケースサイズ
 Rated Voltage Series Capacitance Capacitance Tolerance Option Lead Forming Case Size

◆リップル電流補正係数/
MULTIPLIER FOR RIPPLE CURRENT

| 周波数 (Hz) Frequency | f | 100 ≤ f < 1k | 1k ≤ f < 10k | 10k ≤ f < 20k |
|-----------------------|---|---------------|----------------|---------------|
| 係数 Coefficient | | 0.05 | 0.30 | 0.70 |
| 周波数 (Hz) Frequency | f | 20k ≤ f < 50k | 50k ≤ f < 100k | 100k ≤ f |
| 係数 Coefficient | | 0.80 | 0.90 | 1.00 |

◆表示/MARKING



※電圧記号 Voltage Code

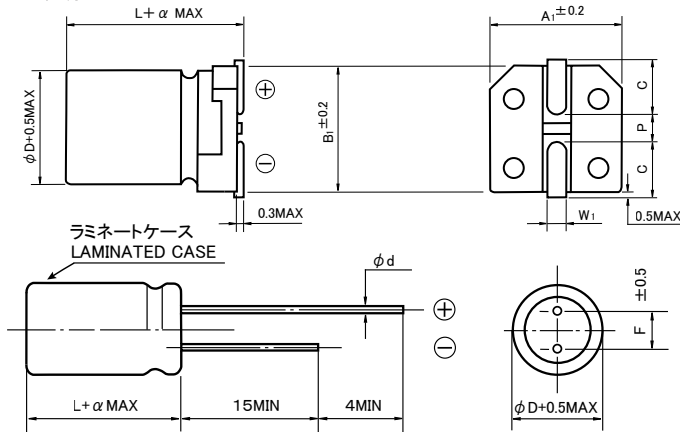
| | | | | |
|-----------------------------|----|----|----|----|
| 定格電圧 Rated Voltage (Vdc) | 25 | 35 | 50 | 63 |
| 電圧記号 Voltage Code | E | V | H | J |



導電性高分子ハイブリッドアルミ電解コンデンサ CONDUCTIVE POLYMER HYBRID ALUMINUM ELECTROLYTIC CAPACITORS

PJV/PZJ

◆寸法図／DIMENSIONS



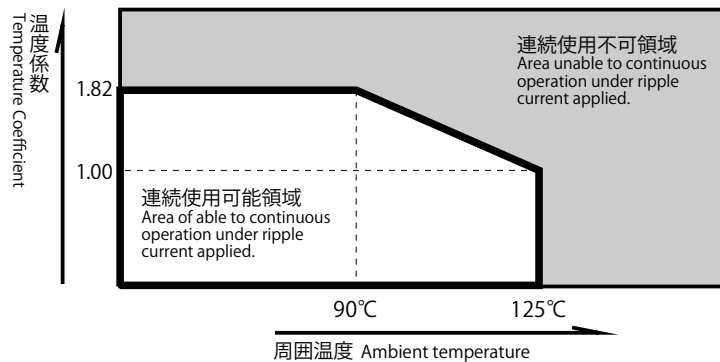
| φD | L | A1 | B1 | C | W1 | P | α |
|-----|------|------|------|-----|---------|-----|-----|
| 6.3 | 6.1 | 6.6 | 6.6 | 2.7 | 0.5~0.8 | 1.8 | 0 |
| 6.3 | 8 | 6.6 | 6.6 | 2.7 | 0.5~0.8 | 1.8 | 0 |
| 8 | 10.5 | 8.3 | 8.3 | 2.9 | 0.8~1.1 | 3.1 | 0 |
| 10 | 10.5 | 10.3 | 10.3 | 3.2 | 0.8~1.1 | 4.5 | 0 |
| 10 | 12.5 | 10.3 | 10.3 | 3.2 | 0.8~1.1 | 4.5 | 0.3 |
| 10 | 16.5 | 10.3 | 10.3 | 3.2 | 0.8~1.1 | 4.5 | 0.3 |

| φD | L | F | φd | α |
|----|----|-----|-----|-----|
| 8 | 9 | 3.5 | 0.6 | 1.5 |
| 10 | 9 | 5.0 | 0.6 | 1.5 |
| 10 | 11 | 5.0 | 0.6 | 1.5 |
| 10 | 15 | 5.0 | 0.6 | 1.5 |

◆標準品一覧表／STANDARD SIZE

| 定格電圧 Rated Voltage (Vdc) | 静電容量 Capacitance (μF) | 外形寸法 Size φD X L (mm) | | 等価直列抵抗 ESR (mΩ MAX, 100kHz) | | 定格リプル電流 Rated Ripple Current (mA rms / 125°C, 100kHz) | 許容リプル電流 Permissible Ripple Current (mA rms) | |
|--------------------------------|-----------------------------|--------------------------|-------------------------------|-----------------------------------|-------|--|---|--------------|
| | | PJV series (SMD) | PZJ series (Radial Lead type) | 20°C | -40°C | | 125°C, 100kHz | 90°C, 100kHz |
| 25 | 68 | 6.3×6.1 | — | 50 | | 1080 | 1080 | 1960 |
| | 150 | 6.3×8 | — | 30 | | 1680 | 1680 | 3220 |
| | 270 | 8×10.5 | 8×9 | 25 | | 1920 | 1920 | 3490 |
| | 470 | 10×10.5 | 10×9 | 20 | | 2800 | 2800 | 5090 |
| | 560 | 10×12.5 | 10×11 | 14 | | 3500 | 3500 | 6370 |
| | 820 | 10×16.5 | 10×15 | 11 | | 4000 | 4000 | 7280 |
| 35 | 56 | 6.3×6.1 | — | 50 | | 1080 | 1080 | 1960 |
| | 100 | 6.3×8 | — | 30 | | 1680 | 1680 | 3220 |
| | 180 | 8×10.5 | 8×9 | 25 | | 1920 | 1920 | 3490 |
| | 330 | 10×10.5 | 10×9 | 20 | | 2800 | 2800 | 5090 |
| | 390 | 10×12.5 | 10×11 | 14 | | 3500 | 3500 | 6370 |
| | 560 | 10×16.5 | 10×15 | 11 | | 4000 | 4000 | 7280 |
| 50 | 82 | 8×10.5 | 8×9 | 30 | | 1700 | 1700 | 3090 |
| | 150 | 10×10.5 | 10×9 | 28 | | 2200 | 2200 | 4000 |
| | 180 | 10×12.5 | 10×11 | 18 | | 3000 | 3000 | 5460 |
| | 220 | 10×16.5 | 10×15 | 13 | | 3600 | 3600 | 6550 |
| 63 | 47 | 8×10.5 | 8×9 | 40 | | 1500 | 1500 | 2730 |
| | 82 | 10×10.5 | 10×9 | 30 | | 1900 | 1900 | 3450 |
| | 100 | 10×12.5 | 10×11 | 19 | | 2700 | 2700 | 4910 |
| | 150 | 10×16.5 | 10×15 | 15 | | 3300 | 3300 | 6000 |

◆温度係数／TEMPERATURE COEFFICIENT FOR RIPPLE CURRENT



| 温度 Temperature T (°C) | T ≤ 90 | 95 | 100 | 105 |
|--|--------|------|------|------|
| 係数 Coefficient (I _{MAX} /I ₀) | 1.82 | 1.73 | 1.63 | 1.52 |
| 温度 Temperature T (°C) | 110 | 115 | 125 | |
| 係数 Coefficient (I _{MAX} /I ₀) | 1.41 | 1.29 | 1.00 | |

温度係数 I_{MAX}/I₀ : 定格リプル電流 (I₀) を超えて連続印加可能なリプル電流最大値 (I_{MAX}) を示す係数。寿命推定時間は寿命計算式に従う。

Temperature Coefficient I_{MAX}/I₀ : Coefficient indicating the maximum permissible ripple current (I_{MAX}) that can be continuously applied beyond the rated current (I₀). Estimated lifetime complies with our lifetime calculation formula.